



Kenwal Steel

STEEL RIGHT, WHEN YOU NEED IT.

HIGH QUALITY PRODUCTS START WITH GETTING
YOU THE HIGHEST QUALITY STEEL. WITH MORE THAN
70 YEARS OF EXPERIENCE MEETING MANUFACTURING'S
STRICTEST PRODUCTION STANDARDS, WITH KENWAL
YOU'LL GET THE RIGHT STEEL, AT THE RIGHT PRICE,
RIGHT WHEN YOU NEED IT.



Titans of the Industry

Kenwal Steel has grown to operate some of North America’s most successful flat-rolled steel service centers. We specialize in meeting the most exacting production and quality standards, with precision processing and more than 70 years of experience. Since 1947, this level of service and detail has fueled Kenwal’s consistent performance and growth.

Over the past 70 years, we’ve developed strong relationships with our customers, who depend on us to get them the right steel, from the right sources, at the right price. **Strength, Expertise, Quality** and **Delivery** are the reasons those relationships have grown.

STRENGTH



From the vast knowledge of our operators to strength in buying power, we are a rock solid, stable, high-volume steel supplier. In fact, we’ve averaged more than a million tons of steel shipped each year.

EXPERTISE



Our metallurgy and tooling design experts support customers at every step of the product life cycle, from steel selection to full production operations. By partnering with Kenwal for your steel supply, we become an extension of your business.

QUALITY

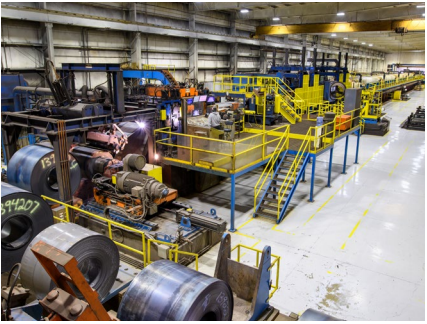


Quality is at the core of our business. Because of this, it’s critical that we ensure and validate right-first-time quality in everything we do. Kenwal is proudly IATF and ISO 14001 certified for quality and environmental management. Our A2LA accredited laboratory and staff ensure that we’re providing the best material that meets and exceeds your specifications.

DELIVERY

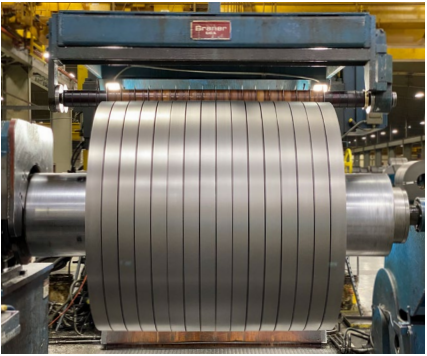


We know the importance of just-in-time delivery to our manufacturing customers. Our teams of experienced operators and material control specialists utilize our state-of-the-art production and inventory control systems to ensure on-time delivery.



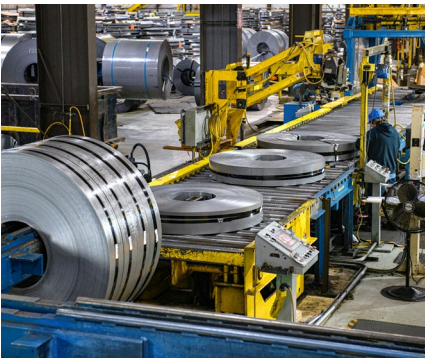
PICKLED STEEL Processed to Your Exact Specifications

Our computer-controlled push-pull steel pickling line and in-line tension-leveling process produces the highest quality pickled & oiled steel possible. Since our pickling line shares a facility with one of our steel slitting locations, processing your entire coiled steel order is fast and efficient – getting you the pickled and slit steel you need, when you need it.



STEEL SLITTING Custom-Cut to Order

Kenwal serves the manufacturing industry with a range of flat-rolled steel slitting capabilities and experienced operators, ensuring you receive the highest quality flat-rolled coils with the exact tolerances you need. Our network of service centers house 7 slitting lines. We specialize in tackling the industry’s toughest applications, continually investing in our equipment and operator training to meet the exacting standards you demand.



SEMI-AUTOMATED PACKAGING Secures Product Safety and Usability

All of Kenwal's steel service centers use a semi-automated packaging line for maximum speed, accuracy and efficiency in preparing your order for shipment. Each order of coiled steel has its own specified packaging, per customer and facility requirements. Our packaging lines allow us to give you coiled steel in any configuration you need for your operations. We meticulously package each coil to your specifications to make sure you’re able to use it as quickly as possible.

Steel Coils Supplied:

- Hot Rolled Steel
- Hot Rolled, Pickled Steel
- Cold Rolled Steel
- Galvanized Steel
- Electrogalvanized Steel
- Galvannealed Steel
- Aluminized Steel
- UHSS, AHSS, Dual Phase and Martensitic Grade Steels

We ARE the High-Strength Experts

When it comes to Ultra High-Strength Steel (UHSS) for your most demanding applications, Kenwal has you covered. We move large volumes of Ultra High-Strength Steel every day, with teams of experts dedicated to getting you the right steel, when you need it!

We have the latest grades and steel types you need to meet your most demanding manufacturing requirements. More than 70 years of working with the world’s leading steel mills means we know where to source the high quality flat-rolled steel you need to meet your production schedule.

Ultra High Strength Steel (UHSS) • Advanced High Strength Steel (AHSS)
Hot Rolled Steel • Cold Rolled Steel • Coated Steel

Our distribution centers are strategically located near major highways, waterways and railroad lines, to allow various modes of shipping from the steel mills. We are also located in close proximity to our customers, for quick turnaround time and low delivery cost.



Kenwal Facilities

We have the steel you need, when you need it, on-time and available 24/7 from our network of service centers. Our steel processing capabilities are backed by competitive pricing and deep technical expertise to optimize your supply of flat-rolled steel. We utilize seven slitting lines in our strategically placed facilities, in addition to our steel pickling line in Dearborn, MI. We pride ourselves on the extra effort we make to deliver, day in and day out.



Dearborn, Michigan

Kenwal's flagship plant is 260,000 square feet with rail access, featuring three 72-inch slitters and a state-of-the-art pickling line.

8223 W. Warren
Dearborn, MI 48126

Phone: (313) 739-1000
Fax: (313) 739-1001



Burns Harbor, Indiana

Kenwal's Burns Harbor plant is 230,000 square feet with rail access and two 72-inch slitters.

307 Tech Drive
Burns Harbor, IN 46304

Phone: (219) 763-7500
Fax: (219) 763-7566



Lebanon, Tennessee

Kenwal's Lebanon facility is 115,000 square feet with rail access and two 72-inch slitters.

3116 Highway 109 North
Lebanon, TN 37090

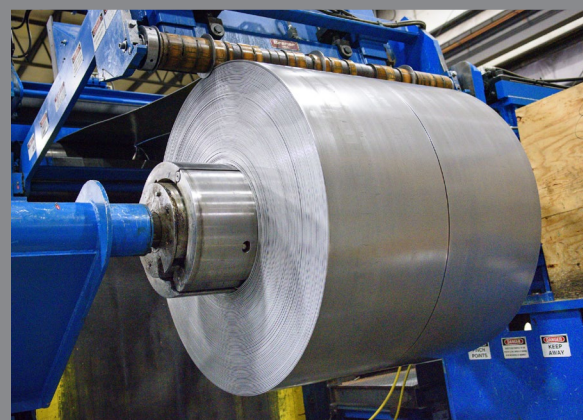
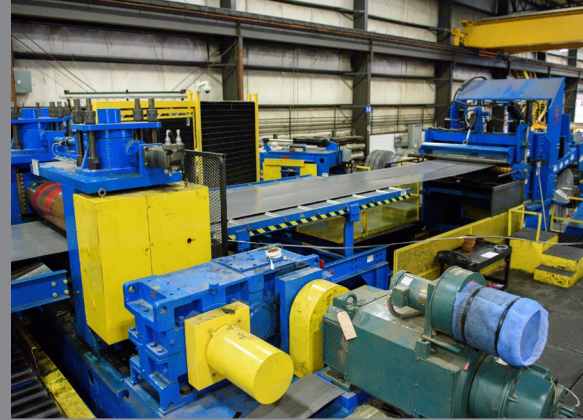
Phone: (615) 443-5700
Fax: (615) 443-5761



STEEL RIGHT, WHEN YOU NEED IT.



Kenwal.com | sales@kenwal.com



DEARBORN, MICHIGAN — Service Center

Kenwal's flagship plant is 160,000 sq. ft. with rail access, featuring three 72-inch slitters. This facility is adjacent to Kenwal Pickling.



Kenwal Steel

STEEL RIGHT, WHEN YOU NEED IT.

DEARBORN, MICHIGAN — Slitting Lines

Specifications:

- Processes: Slitting (3)
- Steel Thickness: 0.020" – 0.375"
- Coil Weight: 70,000 lbs. max
- Coil O.D.: 72" max

Products:

- Coated
- Cold Rolled
- Hot Roll P&O

Grades:

- Mild Carbon through Ultra High Strength Steel (UHSS) up to 205 KSI Tensile

Cranes:

- 6 Overhead
- 38 Ton Capacity

Service Center Features:

- Size of Facility: 160,000 sq. ft.
- Capacity: 800,000 tons/year
- Shimless Tooling
- Computer Assisted Setups
- Looping Pits
- Semi-Automated Packaging Lines
- Inline Leveling
- Gamma Gauge Control
- Traffic Modes: Rail and Truck
- Receive and Ship by Appointment
- EDI Capable
- Labeling: Barcode / SAE and Metric

THREE SLITTING LINES

Process Type	Product Type	Gauge Limits	Width Limits	Max Weight	I.D. Entry	I.D. Exit
#11 Slitter	Aluminized, Galvanized, Cold Rolled	.020"-.090"	74" Max Entry; 72" Max Exit	70,000 lbs.	20"/24"	20"/24"
#12 Slitter	Aluminized, Galvanized, CR, HRPO	.040"-.250"	76" Max Entry; 72" Max Exit	70,000 lbs.	20"/24"	20"/24"
#13 Slitter	HRPO	.060"-.375"	74" Max Entry; 72" Max Exit	70,000 lbs.	20"/24"	20"/24"

Dearborn, Michigan

8223 W. Warren
Dearborn, MI 48126

Phone: (313) 739-1000

Fax: (313) 739-1001

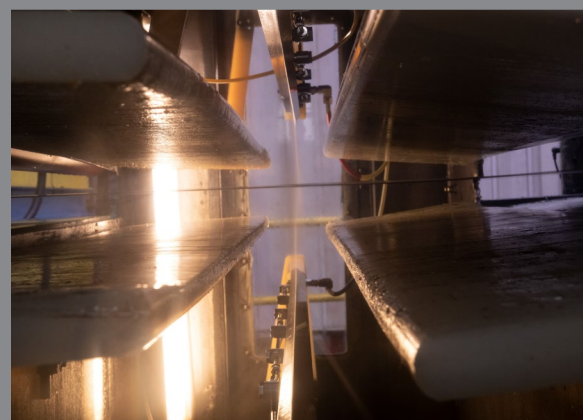


Kenwal Steel

STEEL RIGHT, WHEN YOU NEED IT.



Kenwal.com | sales@kenwal.com



DEARBORN, MICHIGAN — Kenwal Pickling

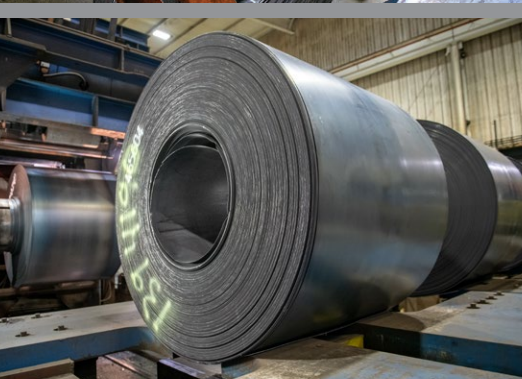
Kenwal's pickling line is housed in a 100,000 sq. ft. facility with rail access.

This facility is adjacent to our Dearborn Service Center.



Kenwal Steel

STEEL RIGHT, WHEN YOU NEED IT.



Pickler Entry Staging and Uncoiler



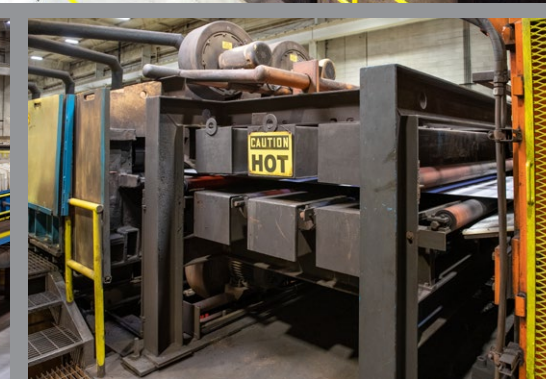
Pickler Entry Operator Station



Tension Leveler



HCl Acid Bath



Rinse and Drying System



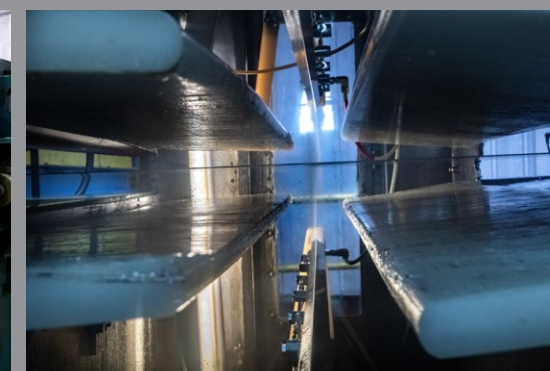
Quality Inspection Table



Parsytec Top and Bottom Surface Inspection



Gamma Gauge Control



Electrostatic Oiler



Pickler Exit Operator Station



Recoiler



Offline Coil Banding Station

DEARBORN, MICHIGAN — Pickling Line

Specifications:

- Processes: HCl Pickling
- Steel Thickness: 0.030" – 0.375"
- Coil Weight: 70,000 lbs. max
- Coil O.D.: 72" max

Products:

- Hot Roll Black

Grades:

- Mild Carbon through Ultra High Strength Steel (UHSS) up to 205 KSI Tensile

Cranes:

- 6 Overhead
- 38 Ton Capacity

Pickling Line Features:

- Size of Facility: 100,000 sq. ft.
- Capacity: 900,000 tons/year
- Full Tension Leveler
- Coil Prep Station
- Scale Breaker
- Anti-Coil Break Roll
- Parsytec Coil Mapping
- Electrostatic Oil Coating
- Gamma Gauge Control
- Parsytec Top and Bottom Inspection
- Overhead Cranes / Fork Lifts
- Traffic Modes: Rail and Truck
- Receive and Ship by Appointment
- EDI Capable
- Labeling: Barcode / SAE and Metric



Dearborn, Michigan

8223 W. Warren
Dearborn, MI 48126
Phone: (313) 739-1000
Fax: (313) 739-1001



BURNS HARBOR, INDIANA — Service Center

Kenwal's Burns Harbor plant is 230,000 sq. ft. with rail access and two 72-inch slitters.

BURNS HARBOR, INDIANA

Specifications:

- Processes: Slitting (2)
- Steel Thickness: 0.015" – 0.250"
- Coil Weight: 70,000 lbs. max
- Coil O.D.: 72" max

Products:

- Coated
- Cold Rolled
- Hot Roll P&O
- Hot Roll Black

Grades:

- Mild Carbon through Ultra High Strength Steel (UHSS) up to 205 KSI Tensile

Cranes:

- 9 Overhead
- 30 Ton Capacity

Service Center Features:

- Size of Facility: 230,000 sq. ft.
- Capacity: 400,000 tons/year
- Shimless Tooling
- Computer Assisted Setups
- Looping Pits
- Semi-Automated Packaging Lines
- Inline Leveling
- Gamma Gauge Control
- Overhead Cranes
- Traffic Modes: Rail and Truck
- Receive and Ship by Appointment
- EDI Capable
- Labeling: Barcode / SAE and Metric

TWO SLITTING LINES

Process Type	Product Type	Gauge Limits	Width Limits	Max Weight	I.D. Entry	I.D. Exit
#61 Slitter	Aluminized, Galvanized, Cold Rolled, HRPO	.015"-.135"	74" Max Entry; 72" Max Exit	60,000 lbs.	20"/24"	20"/24"
#62 Slitter	Aluminized, Galvanized, CR, HRPO	.015"-.250"	74" Max Entry; 74" Max Exit	70,000 lbs.	20"/24"	20"/24"

Burns Harbor, Indiana

307 Tech Drive
Burns Harbor, IN 46304
Phone: (219) 763-7500
Fax: (219) 763-7566



LEBANON, TENNESSEE — Service Center

Kenwal's Lebanon facility is 115,000 sq. ft. with rail access and two 72-inch slitters.



Kenwal Steel

STEEL RIGHT, WHEN YOU NEED IT.

LEBANON, TENNESSEE

Specifications:

- Processes: Slitting (2)
- Steel Thickness: 0.015" – 0.375"
- Coil Weight: 70,000 lbs. max
- Coil O.D.: 72" max

Materials:

- Coated
- Cold Rolled
- Hot Roll P&O

Grades:

- Mild Carbon through Ultra High Strength Steel (UHSS) up to 205 KSI Tensile

Cranes:

- 4 Overhead
- 40 Ton Capacity

Service Center Features:

- Size of Facility: 115,000 sq. ft.
- Capacity: 350,000 tons/year
- Shimless Tooling
- Computer Assisted Setups
- Looping Pits
- Semi-Automated Packaging Lines
- Inline Leveling
- Gamma Gauge Control
- Overhead Cranes
- Traffic Modes: Rail and Truck
- Receive and Ship by Appointment
- EDI Capable
- Labeling: Barcode / SAE and Metric

TWO SLITTING LINES

Process Type	Product Type	Gauge Limits	Width Limits	Max Weight	I.D. Entry	I.D. Exit
#81 Slitter w/Korflex Leveler	Aluminized, Galvanized, Cold Rolled, HRPO	.015"-.135"	74" Max Entry; 72" Max Exit	60,000 lbs.	20"/24"	20"/24"
#82 Slitter	Aluminized, Galvanized, CR, HRPO	.015"-.250"	74" Max Entry; 74" Max Exit	70,000 lbs.	20"/24"	20"/24"

Lebanon, Tennessee

3116 Highway 109 North
Lebanon, TN 37090

Phone: (615) 443-5700

Fax: (615) 443-5761